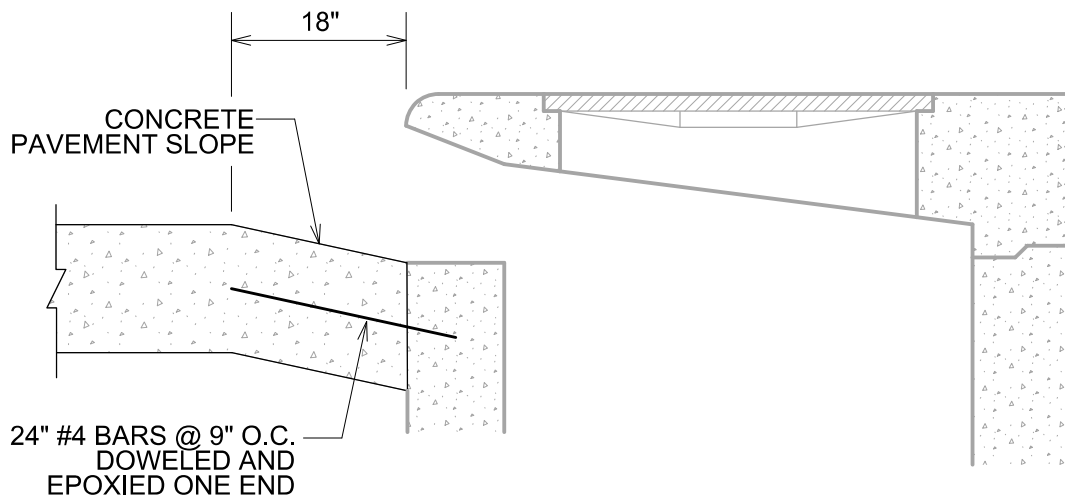
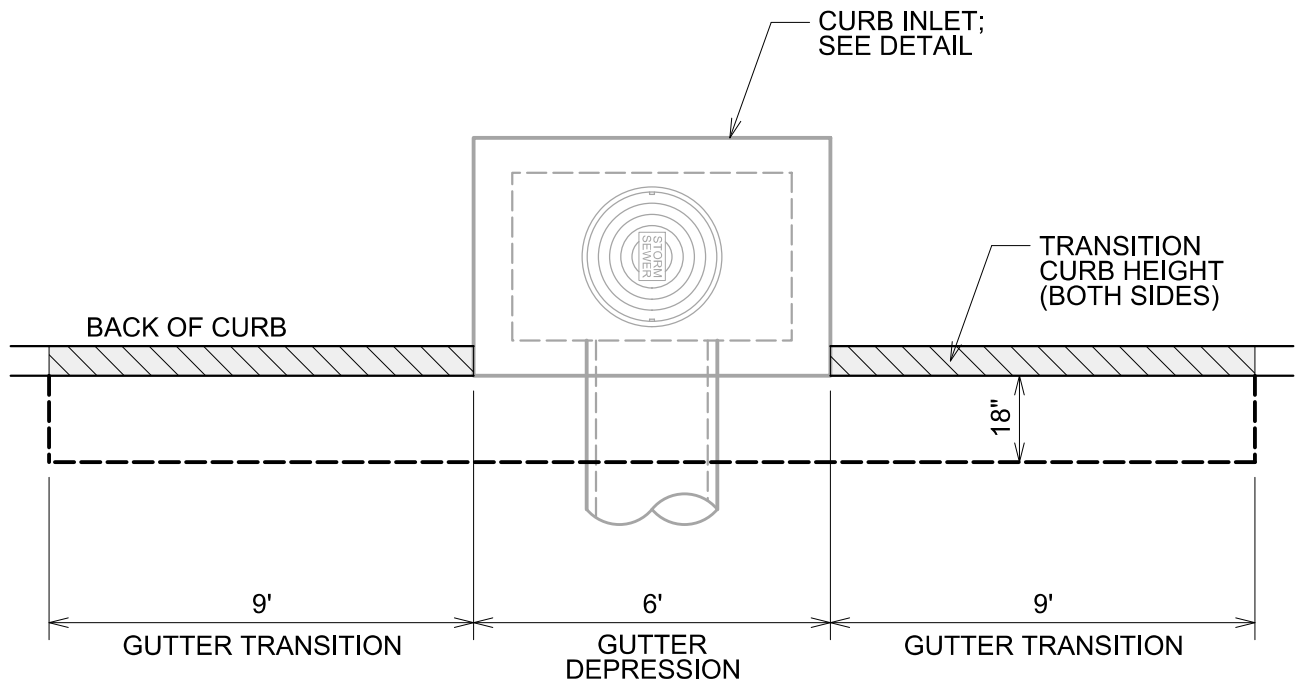


GENERAL NOTES

- GUTTER DEPRESSION SHALL NOT BE LOCATED WITHIN THE AREA OF A CURB RAMP/LANDING OR DRIVEWAY.



GUTTER DEPRESSION AT CURB INLET

STANDARD CONSTRUCTION DETAILS

DATE: 07/20/21

REVISED
DATE: 07/20/21

STM - 4